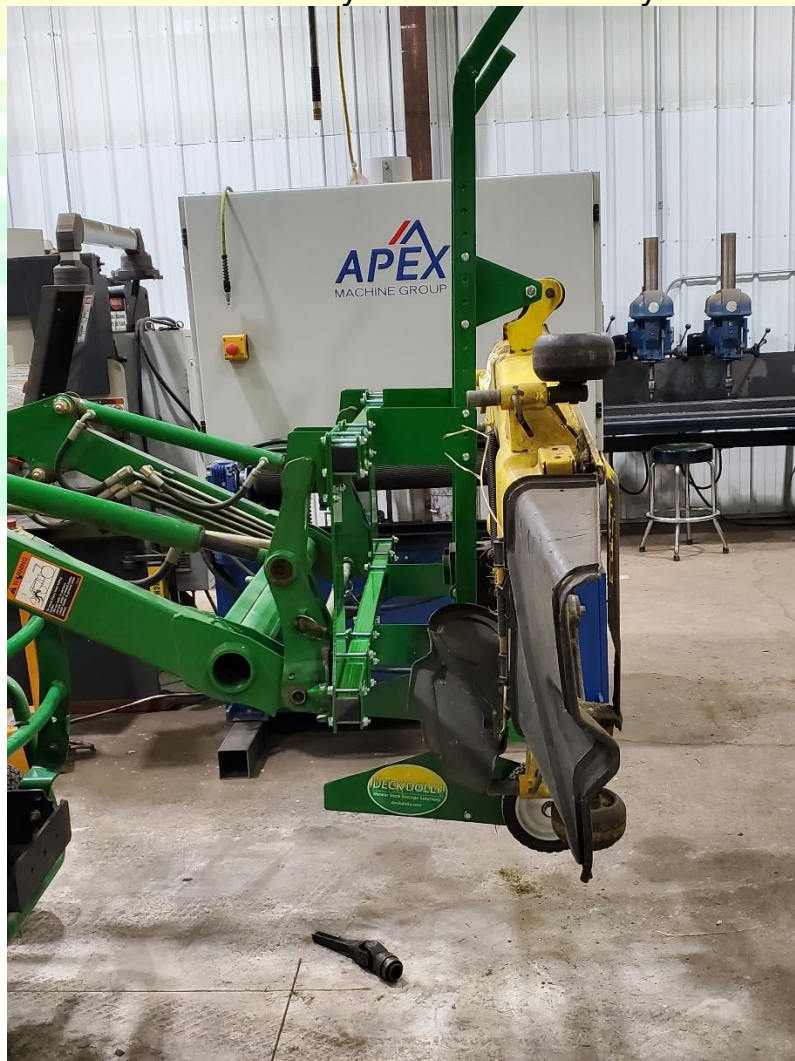




## ASSEMBLY INSTRUCTIONS

John Deere Quick Attach Loader to DeckDolly Adapter  
To be used with any and all DeckDollys.



## **IMPORTANT!!**

After assembly, please be sure to operate with caution while moving with your loader. Adapter is designed to be used on smooth, flat surfaces. Standing the Deck Dolly in the upright position on soft or uneven surfaces may lead to injury and/or damage.

**Note:** Please use caution until you are comfortable using the adapter.

A video showing use of the dolly is available on the Support page at [deckdolly.com](http://deckdolly.com).

### **Assembly Instructions**

- 1) Open packaging and inspect to ensure contents are complete.
- 2) Contents should be as pictured below:



2 – JD Quick Attach Brackets



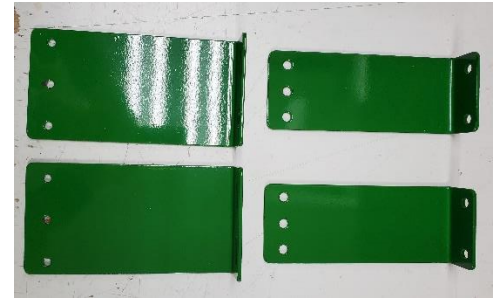
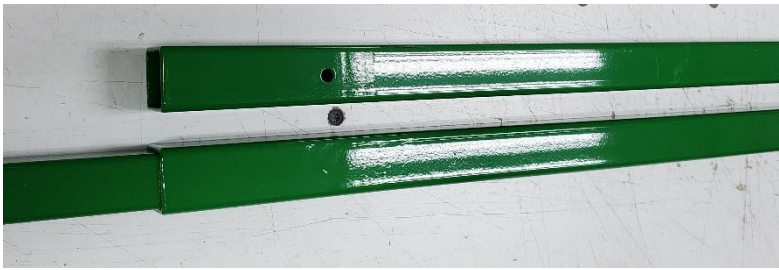
4 – Hook Brackets



12 - Flat Straps



4 - End Caps



1 – 25  $\frac{3}{4}$ " x 1  $\frac{1}{2}$ " Tube 1 – 30  $\frac{1}{4}$ " x 1  $\frac{1}{2}$ " Tube      2 – Upper Brackets 2 – Lower Brackets

Not shown is a 45  $\frac{3}{4}$  x 1  $\frac{1}{2}$ " Tube

QTY	HARDWARE	Useage
16	5/16 x 2 1/4 Flange Bolt	Bracket to Tube
8	5/16 x 2 1/2 Flange Bolt	Upper Holes of Hook Brackets to Tube
4	5/16 x 3/4 Flange Bolt	Lower Hole of the Hook to JDQA
1	5/16 x 1 3/4 Flange Bolt	Attach lower Tube Together
6	5/16 x 1 1/4 Flange Bolt	Lower Brackets to Dolly
6	1/4 x 1 1/4 Flange Bolt	Upper Brackets to Dolly
4	End Caps	Tap into ends of tubes
35	5/16 Flange Nuts	5/16 Bolts
6	1/4 Flange Nuts	1/4 Bolts



## STEP 1

Preassemble the lower tube as shown with 5/16" x 1 3/4" flange bolt and tighten.



Then install the end caps in the end of the upper and lower tubes. Example below.



## STEP 2

Preassemble the John Deere Quick Attach brackets and hook brackets and flat straps. First use a 5/16 x 3/4" flange bolt and nut in the lower hole of the hook bracket and JDQA bracket to aid in alignment. Then pass a 5/16 x 2 1/2" flange bolt through the hook and JDQA bracket, placing a flat strap on the backside and nut. See picture below for review. Continue until the assembly looks as shown below.



### Step 3

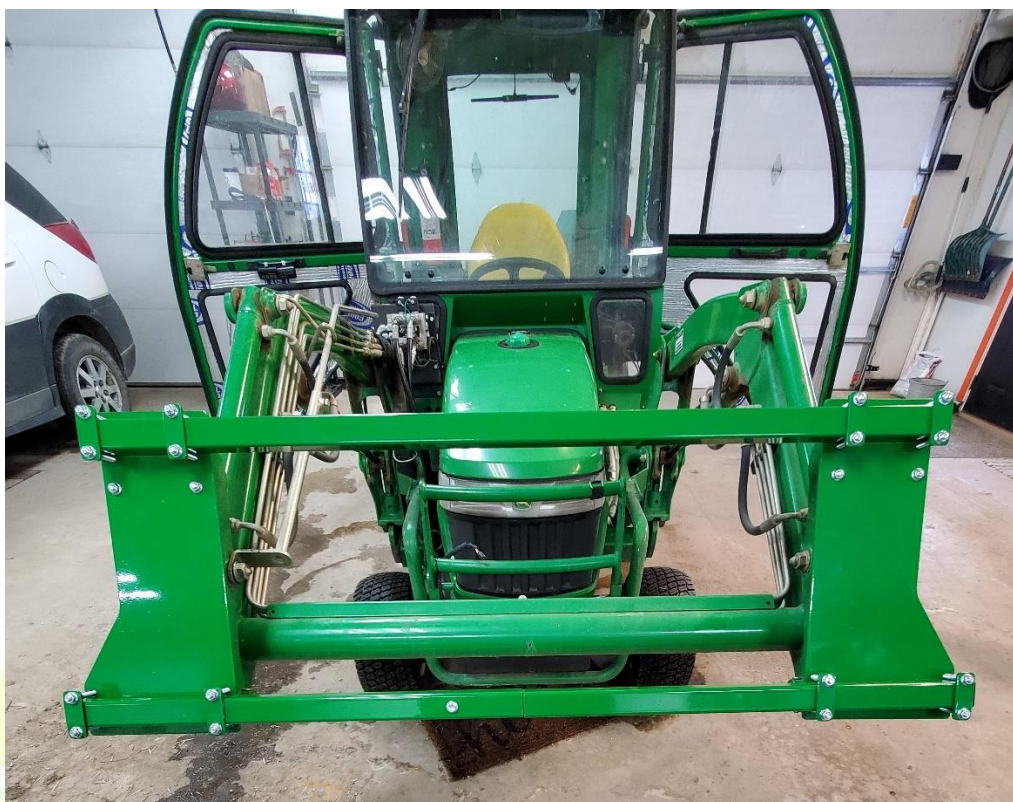
Hang the previously assembled JDQA brackets on the loader and engage the locking pins as shown below.



### STEP 4

Slide the lower tube into position as shown below. Center and tighten the 8 - 5/16 x 2 1/4 bolts. Install the top tube into position. Center the tube and tighten the 8 - 5/16 x 2 1/2 bolts.





#### STEP 5

Install upper and lower deck dolly brackets loosely using 8 – 5/16 x 2 ¼ bolts and straps. This picture illustrates a leg attached for an example.





## Step 6

At this point you connect the deck dolly to the upper and lower adapter brackets. Start with the 9th hole from the bottom of the deck dolly and insert a 5/16 x 1 ¼ bolt through the bottom hole of the bottom bracket and attach nut. Then insert another bolt into next hole. Note that there are several iterations of the legs so the number of holes may vary. Repeat for opposite side.

## Step 7

Proceed to upper brackets. Insert ¼ x 1 ¼ bolt through middle hole of bracket into bottom hole in the upper set of holes of the deck dolly. Insert another bolt into next hole up. Repeat for opposite side.

## Step 8

With the bolts loosely attached, center the deck dolly on the adapter bars and once satisfied with fit, tighten all bolts. Remaining holes may be field drilled if required. Future deck dolly legs will be drilled to fit the adapter. The assembly should look like the picture below. Assembly is complete after checking all bolts for tightness.





## Step 9

Below are pictures showing the use of the deck dolly adapter.

